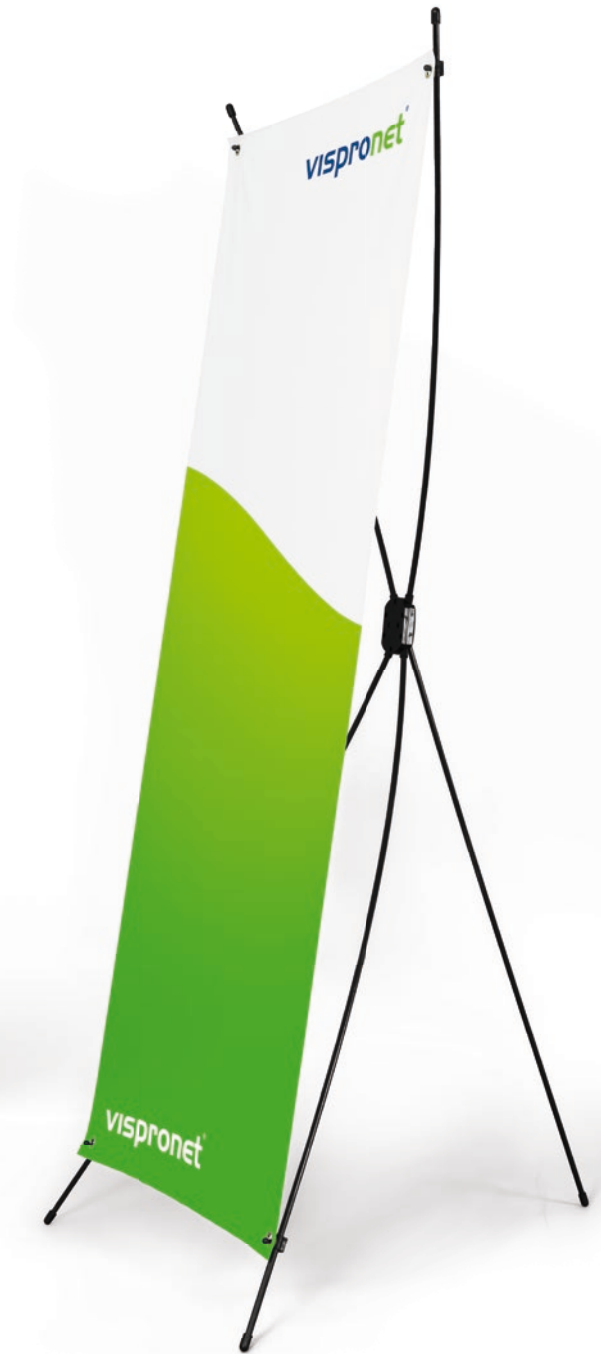




SACHSEN FAHNEN

vispronet®

# DISPLAY SYSTEMS



INFORM  
CREATE  
ORDER

vispro®  
design



# TABLE OF CONTENTS

---



**vispronet**<sup>®</sup>

EASY DISPLAY	2
EASY DISPLAY, DOUBLE SIDED	2
TUBE DISPLAY	5
X-DISPLAY SELECT	8
X-DISPLAY ECONOMY	8
ACCESSORIES	11



SACHSEN FAHNEN

vispronet®

# EASY DISPLAY

---

- Inexpensive all-rounder for indoor use
- Low weight and easy handling
- Expandable as required using connectors
- Suitable for prints with contours



# EASY DISPLAY, DOUBLE SIDED

---

- Fitted with two advertising spaces
- Fixed system height of 206 cm
- Faster change of motif possible with clamping strips
- For indoor use



# EASY DISPLAY



<b>Frame</b>	<p><b>Weight:</b> 1.45 kg</p> <p><b>Frame size (W x H x D):</b> 80 x 206 x 51 cm</p> <ul style="list-style-type: none"> <li>· Base, rod (3-part), 2 clamping strips made of aluminium</li> <li>· <b>Fixed height:</b> 206 cm</li> </ul>
<b>Print</b>	<p><b>Size visible (W x H):</b> 80 x 200 cm</p> <p><b>Material:</b></p> <ul style="list-style-type: none"> <li>· Display film 240, approx. 240 µm</li> <li>· Dekoflag H SE, approx. 120 g/m<sup>2</sup></li> <li>· Multisol® L SE, approx. 115 g/m<sup>2</sup></li> <li>· Multisol® X SE, approx. 200 g/m<sup>2</sup></li> <li>· Vinyl (PVC) opaque, approx. 440 g/m<sup>2</sup></li> </ul> <p><b>Finish:</b></p> <ul style="list-style-type: none"> <li>· cut all round, fastening in terminal strips</li> </ul>
<b>Delivery content</b>	<ul style="list-style-type: none"> <li>· Easy Display incl. clamped print, packed in a cloth bag with pull loop and carrying case</li> </ul>



All sizes are approximate. As we are constantly developing our products we reserve the right of changing technical issues and dimensional deviations.

# EASY DISPLAY, DOUBLE SIDED



**vispronet**



<b>Frame</b>	<p><b>Weight:</b> 3.2 kg  <b>Frame size (W x H x D):</b> 80 x 206 x 37 cm</p> <ul style="list-style-type: none"> <li>· Base, rod (3-part), 4 clamping strips made of aluminium</li> <li>· <b>Fixed height:</b> 206 cm</li> </ul>
<b>Print</b>	<p><b>Size visible (W x H):</b> 2 prints each 80 x 200 cm</p> <p><b>Material:</b></p> <ul style="list-style-type: none"> <li>· Display film 240, approx. 240 µm</li> <li>· Dekoflag H SE, approx. 120 g/m<sup>2</sup></li> <li>· Multisol® L SE, approx. 115 g/m<sup>2</sup></li> <li>· Multisol® X SE, approx. 200 g/m<sup>2</sup></li> <li>· Vinyl (PVC) opaque, approx. 440 g/m<sup>2</sup></li> </ul> <p><b>Finish:</b></p> <ul style="list-style-type: none"> <li>· cut all round, fastening in terminal strips</li> </ul>
<b>Delivery content</b>	<ul style="list-style-type: none"> <li>· Easy Display double-sided incl. clamped prints, packed in a cloth bag with pull loop and carrying case</li> </ul>



All sizes are approximate. As we are constantly developing our products we reserve the right of changing technical issues and dimensional deviations.

# TUBE DISPLAY

---



- Flexible with selectable various sizes
- Optionally equipped with cover or banner
- Easy and quick assembly
- Can be used outdoors with additional weighting

# TUBE DISPLAY WITH COVER



**vispronet**



Frame	1	2	3	4
	<p><b>Weight:</b> 7.3 kg</p> <p><b>Frame size incl. base plate (W x H x D):</b> 80 x 228 x 25 cm</p>	<p><b>Weight:</b> 7.7 kg</p> <p><b>Frame size incl. base plate (W x H x D):</b> 80 x 296 x 25 cm</p>	<p><b>Weight:</b> 8.4 kg</p> <p><b>Frame size incl. base plate (W x H x D):</b> 96 x 228 x 25 cm</p>	<p><b>Weight:</b> 8.8 kg</p> <p><b>Frame size incl. base plate (W x H x D):</b> 96 x 296 x 25 cm</p>
	<ul style="list-style-type: none"> <li>· <b>Aluminum frame</b> made of aluminum hollow profiles that can be easily join together, tube diameter 33 mm, profile thickness 1.25 mm (bottom 3 segments connected with rubber cord), locking with spring buttons, incl. pre-assembled springs with hooks for attaching an eyeleted print</li> <li>· <b>Base plate:</b> steel, silver-coloured powder-coated with integrated carrying handle, on the underside with 4 felt gliders as scratch protection</li> </ul>			
Print	<p><b>Size (W x H):</b> 79 x 226 cm</p>	<p><b>Size (W x H):</b> 79 x 294 cm</p>	<p><b>Size (W x H):</b> 94 x 226 cm</p>	<p><b>Size (W x H):</b> 94 x 294 cm</p>
	<p><b>Material:</b></p> <ul style="list-style-type: none"> <li>· Multisol® X SE, approx. 200 g/m<sup>2</sup></li> <li>· Multisol® D SE, approx. 205 g/m<sup>2</sup> (screen printing)</li> <li>· Multisol® X Opak SE, matt, approx. 250 g/m<sup>2</sup>: opaque material, brilliant colours, high colour intensity</li> </ul> <p><b>Finish:</b></p> <ul style="list-style-type: none"> <li>· printed on both sides, same or different designs on front and back</li> </ul>			
Delivery content	<ul style="list-style-type: none"> <li>· Print, rod segments and base plate packed in a shipping carton with carrying strap</li> </ul>			

All sizes are approximate. As we are constantly developing our products we reserve the right of changing technical issues and dimensional deviations.

# TUBE DISPLAY WITH BANNER



**vispronet**



Frame	1	2	3	4
	<p><b>Weight:</b> 7.3 kg</p> <p><b>Frame size incl. base plate (W x H x D):</b> 80 x 228 x 25 cm</p>	<p><b>Weight:</b> 7.7 kg</p> <p><b>Frame size incl. base plate (W x H x D):</b> 80 x 296 x 25 cm</p>	<p><b>Weight:</b> 8.4 kg</p> <p><b>Frame size incl. base plate (W x H x D):</b> 96 x 228 x 25 cm</p>	<p><b>Weight:</b> 8.8 kg</p> <p><b>Frame size incl. base plate (W x H x D):</b> 96 x 296 x 25 cm</p>
	<ul style="list-style-type: none"> <li>· <b>Aluminum frame</b> made of aluminum hollow profiles that can be easily join together, tube diameter 33 mm, profile thickness 1.25 mm (bottom 3 segments connected with rubber cord), locking with spring buttons, incl. pre-assembled springs with hooks for attaching an eyeleted print</li> <li>· <b>Base plate:</b> steel, silver-coloured powder-coated with integrated carrying handle, on the underside with 4 felt gliders as scratch protection</li> </ul>			
Print	<p><b>Size (W x H):</b> 62 x 207 cm</p>	<p><b>Size (W x H):</b> 62 x 274 cm</p>	<p><b>Size (W x H):</b> 77 x 207</p>	<p><b>Size (W x H):</b> 77 x 274</p>
	<p><b>Material:</b></p> <ul style="list-style-type: none"> <li>· Multisol® X SE, approx. 200 g/m<sup>2</sup></li> <li>· Multisol® D SE, approx. 205 g/m<sup>2</sup> (screen printing)</li> </ul> <p><b>Finish:</b></p> <ul style="list-style-type: none"> <li>· printed on one side, motif mirrored on the back</li> <li>· cut all around, corners with eyelets ø 10 mm (eyelets reinforced)</li> </ul>			
Delivery content	<ul style="list-style-type: none"> <li>· Print, rod segments and base plate, packed in a transport box with a carrying strap</li> </ul>			

All sizes are approximate. As we are constantly developing our products we reserve the right of changing technical issues and dimensional deviations.



# X-DISPLAY SELECT

---

- Ultra-lightweight, low-cost display for indoor use
- Excellent value for money
- Flexible display with X structure, suitable for 10 different print sizes
- Eyelet attachment tightened with X-shaped rods
- 3-leg system for a secure footing



# X-DISPLAY ECONOMY

---

- Absolute lightweight for indoor use: 0.32 kg
- Excellent value for money
- Print with eyelets tensioned with x-shaped rods
- 3-leg system for a secure footing



# X-DISPLAY SELECT



vispronet®



<b>Frame</b>	<p><b>Weight:</b> 2.1 kg</p> <ul style="list-style-type: none"> <li>· Aluminum frame with 2 telescopic rods made of glass fiber reinforced plastic (GRP)</li> <li>· <b>10 different sizes adjustable</b></li> </ul>
<b>Print</b>	<p><b>Sizes visible (W x H):</b>          60 x 180 cm, 80 x 180 cm, 100 x 180 cm          60 x 200 cm, 80 x 200 cm, 100 x 200 cm, 110 x 200 cm          60 x 220 cm, 80 x 220 cm, 100 x 220 cm</p> <p><b>Material:</b></p> <ul style="list-style-type: none"> <li>· Display film 240, approx. 240 µm</li> <li>· PVC standard grade (Frontlitt B1/M1), approx. 510 g/m<sup>2</sup></li> <li>· Vinyl (PVC) opaque, approx. 440 g/m<sup>2</sup></li> </ul> <p><b>Finish:</b></p> <ul style="list-style-type: none"> <li>· Cut all around, corners with eyelets ø 10 mm, attachment with eyelets</li> </ul>
<b>Delivery content</b>	<ul style="list-style-type: none"> <li>· Advertising stand X-Display Select (in a fabric bag with a pull loop) and rolled print packed in a transport case</li> <li>· Prints made of display film 240 with a width of 100 cm or more are delivered separately packed</li> </ul>



All sizes are approximate. As we are constantly developing our products we reserve the right of changing technical issues and dimensional deviations.

# X-DISPLAY ECONOMY



<b>Frame</b>	<p><b>Weight:</b> 0.32 kg</p> <p><b>System size (W x H x D):</b> 64 x 165 x 55 cm</p> <ul style="list-style-type: none"> <li>· 5 rods made of glass fiber reinforced plastic (GRP) connected by 1 plastic holder</li> </ul>
<b>Print</b>	<p><b>Size visible (W x H):</b> 60 x 150 cm</p> <p><b>Material:</b></p> <ul style="list-style-type: none"> <li>· Dekofil, approx. 65 g/m<sup>2</sup></li> <li>· Display film 240, approx. 240 µm,</li> <li>· PVC-coated polyester fabric Vinyl Opak, approx. 440 g/m<sup>2</sup></li> </ul> <p><b>Finish:</b></p> <ul style="list-style-type: none"> <li>· Cut all around, corners with eyelets ø 10 mm, attachment with eyelets</li> </ul>
<b>Delivery content</b>	<ul style="list-style-type: none"> <li>· Advertising stand X-Display Economy, packed in a fabric bag with pull loop, print enclosed separately</li> </ul>



All sizes are approximate. As we are constantly developing our products we reserve the right of changing technical issues and dimensional deviations.



## Halogen spot for Displays

- Halogen spot 50 W
- Incl. transformer, 12 V and power connection cable
- Packed in a padded transport bag (fabric, black) with a practical carrying strap
- Suitable for all Easy Display indoors



## LED spot for Displays

- Energy-saving LED spot 5 W
- Silver-coloured, powder-coated
- Dimensions: 450 x 130 x 40mm
- Incl. transformer, 12 V and power connection cable
- Suitable for all Easy Display



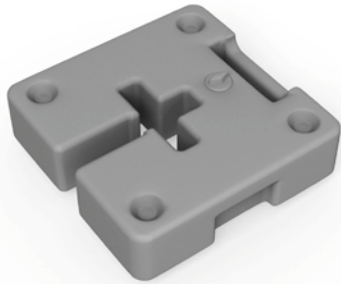
## Connector for Easy Display

- Connector for Easy Display, one-sided
- Dimensions (L x H): 120 x 11mm
- Simple assembly: slide into the terminal strips of the Easy Display, fasten with 2 screws
- For connecting several one-sided Easy Display



## Hard case Trolley 164

- Universal transport trolley made of plastic (HDPE)
- Incl. 2 wheels and handle
- 3 fastening straps outside, 3 safety straps inside
- External dimensions (L x W x H): 164 x 43 x 27 cm
- Usable size inside (L x W x H): 160 x 35 x 24 cm
- Maximum filling weight 31 kg
- Suitable for all Easy Display, X-Display



## Plastic weight, water fillable 7,5 l

- Universal weight for additional stabilization of Tube Display
- Plastic, silver-grey
- With practical carrying handle, stackable
- Size (W x H x D): 37 x 12 x 37 cm
- Capacity approx. 7.5 l, cannot be used in sub-zero temperatures



## Water-fillable weight, 10 l

- ø outside 53 cm, ø inside 11 cm
- Capacity approx. 10 l, cannot be used in sub-zero temperatures
- Suitable for Tube Display



## Stackable weight plate 18 x 20 cm, 5 kg

- Especially suitable for outdoor use
- Weights with flexible surface, individually stackable
- Suitable for Tube Display



## Universal bag

- High-quality transport bag made of robust fabric and reinforced corners
- Adjustable shoulder strap on the long side
- Two sides with handle and 2 zippers
- Cover with pockets, internal elastic bands for attachment
- Underside with 4 plastic feet



- **Universal bag 90** – suitable for Easy Display and X-Display, Tube Display
- Internal dimensions (L x W x H): 90 x 26 x 8 cm
- **Universal bag 110** – suitable for Triple Display und X-Display, Tube Display
- Internal dimensions (L x W x H): 110 x 26 x 8 cm
- **Universal bag 130** – suitable for X-Display
- Internal dimensions (L x W x H): 130 x 26 x 8 cm